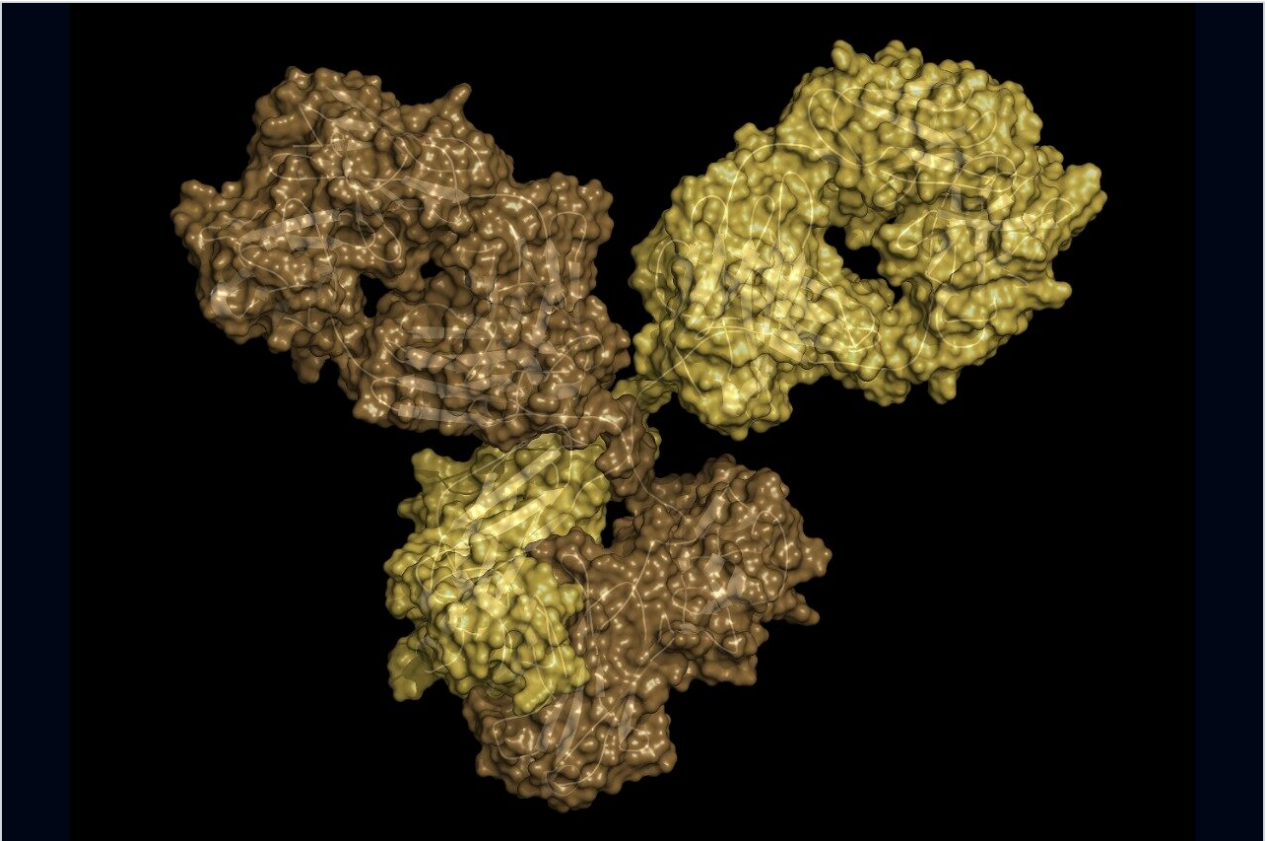


응용 자료

HRMS System Check for Intact Protein Quantification

Armand Ngounou, Yun Alelyunas, Mark Wrona

Waters Corporation



Abstract

This application note reports a routine system check to assess LC-MS system performance prior to intact protein quantification (intact or subunit analysis). Also this procedure assures optimal and robust performance. The method can also be used for troubleshooting a system that is presenting abnormal behaviors.

Benefits

- A system check (SC) ensures proper setup for intact protein bioanalysis (e.g. mAbs: intact and subunits)
- The SC can also be used as a troubleshooting approach in identifying problems with a system
- A SC generates confidence in the quality and reliability of the data generated on the LC-MS system

Introduction

In recent years, there has been a significant increase in interest in the (direct) bioanalysis of intact proteins, such as monoclonal antibodies (mAbs).¹ As a result, bioanalytical scientists are increasingly interested in performing intact protein analysis. To be successful and generate reliable data, it is imperative that the user ensures: proper conditioning of the LC-MS system, careful sample preparation, and general care when setting up for analysis. Without proper system setup, it is common to observe: little or no signal of the analyte; poor chromatographic performance; and suboptimal sensitivity.

This document is designed to help the user performing intact and/or subunit protein analysis evaluate the performance or suitability of the instrument by undertaking a simple system check (SC) and running of QC standards. The status of the system is evaluated by running the NIST mAb subunit standard and assessing the following parameters: retention time reproducibility, chromatographic peak resolution, sensitivity, accuracy, and precision. Herein we show how to ensure an LC-QToF platform is ready for performing intact-level protein and subunit quantification using full scan ToF-MS.

This test should be routinely performed prior to the bioanalysis of intact proteins (e.g. mAbs: intact and subunit), particularly when the lab is routinely switching molecule classes and changing LC conditions. This simple guide will walk users through the steps required to ensure optimum performance of the Xevo G2-XS QToF Mass Spectrometer prior to running large molecule bioanalysis, thus ensuring confident sample analysis.

Experimental

Instrument setup and calibration

This should be performed as needed and is useful when switching from other application work, such as peptide and/or small molecule analysis (Figure 1).

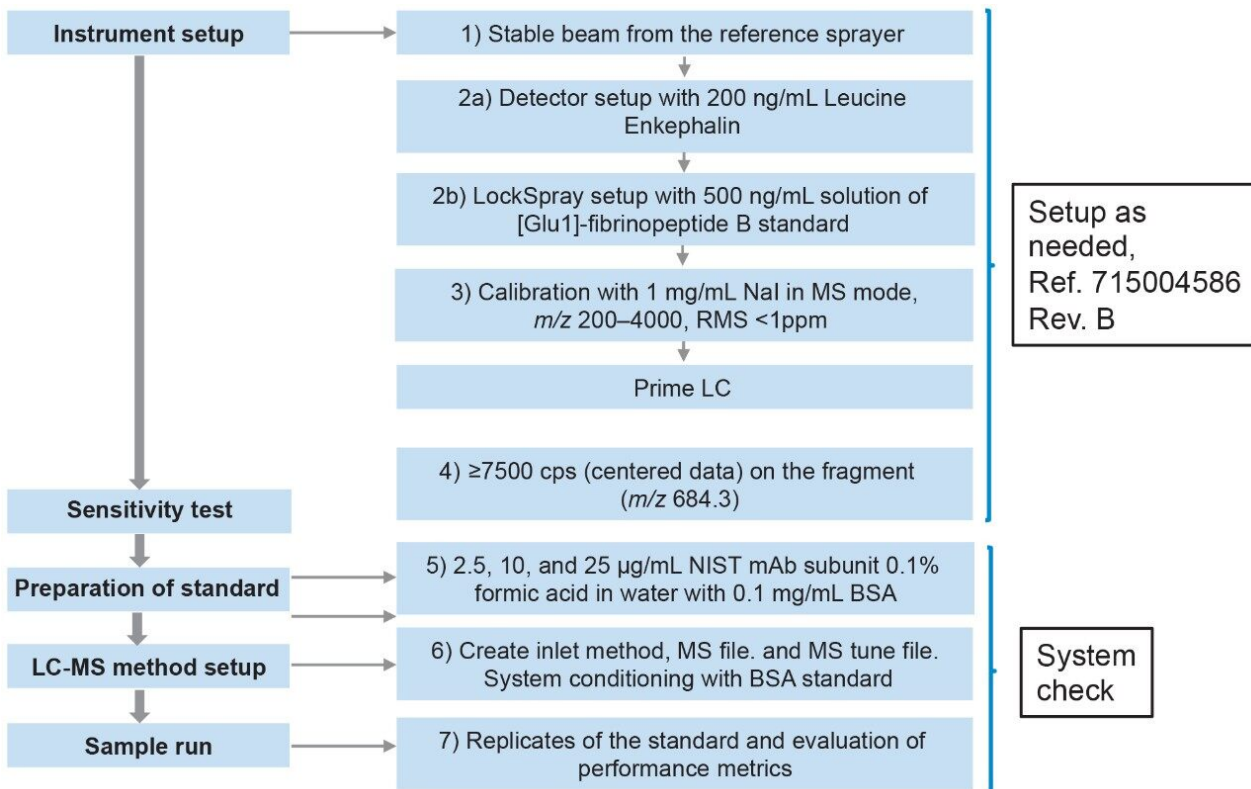


Figure 1. Overview of steps involved in the system check.

1. Check that the tune page shows a stable beam from the reference sprayer.
2. IntelliStart LockSpray setup should be performed using a 500 ng/mL solution of [Glu1]-Fibrinopeptide B standard (GFP).
3. Calibration of the instrument over the mass range of m/z 200–4000 Da should be performed with a solution of 1 mg/mL NaI in positive MS mode. Mass calibration should give an RMS of <1 ppm for a well calibrated system.

Note 1: If sensitivity or calibration is poor, detector setup should be performed using IntelliStart with a 200

ng/mL leucine enkephalin solution. It is not necessary to perform the detector setup on a regular basis, unless the instrument has been vented, or after critical maintenance has been undertaken on the instrument. Once completed, repeat sensitivity test and calibration procedure.

Note 2: In general, large molecule instrument setup parameters (also called proteomics parameters) described in the installation manual should be followed.

Instrument sensitivity test

This document is intended as a guide for optimizing a system that is setup according to the official installation manual (715004586 Rev. B). Key steps are summarized here. For detailed test instructions, please refer to the protocol described in the Xevo G2-XS QToF installation manual.

4. A 100 fmol/ μ L solution of GFP is directly infused through the analyte sprayer at 5 μ L/min. The signal height must be ≥ 7500 counts per second (centered data) on the fragment ion (m/z 684.3) from the MS/MS. The mass resolution must be $\geq 15,000$ (FWHM), measured on the fragment ion (m/z 175.1).

Subunit standard preparation

The NIST mAb subunit results from the reduction and IdeS digestion of the NIST Reference Material 8671 (Figure 2). Following successful setup of the LC and MS, the samples are prepared as follows:

5a. Reconstitute NIST mAb subunit standard vial in 100 μ L of 0.1 mg/mL BSA in 0.1% formic acid in water. Aliquots can be made and stored at -20 °C long term.

5b. Prepare dilution of the standard at 2.5, 10, and 25 μ g/mL in the same buffers mentioned above. These solutions should be stored at 4–8 °C and must be used over a period of five days. It is recommended to make the dilutions fresh prior to analysis in order to obtain reproducible results as it was noticed during stability and reconstitution testing that some losses of protein could occur even in the presence of BSA. It should be noted that the system may require further conditioning with a proteinaceous sample (BSA standard or precipitated plasma supernatant) prior to running the subunit standard. This also ensures that any available binding sites on the instrument, or any other material used for sample preparation, are blocked.

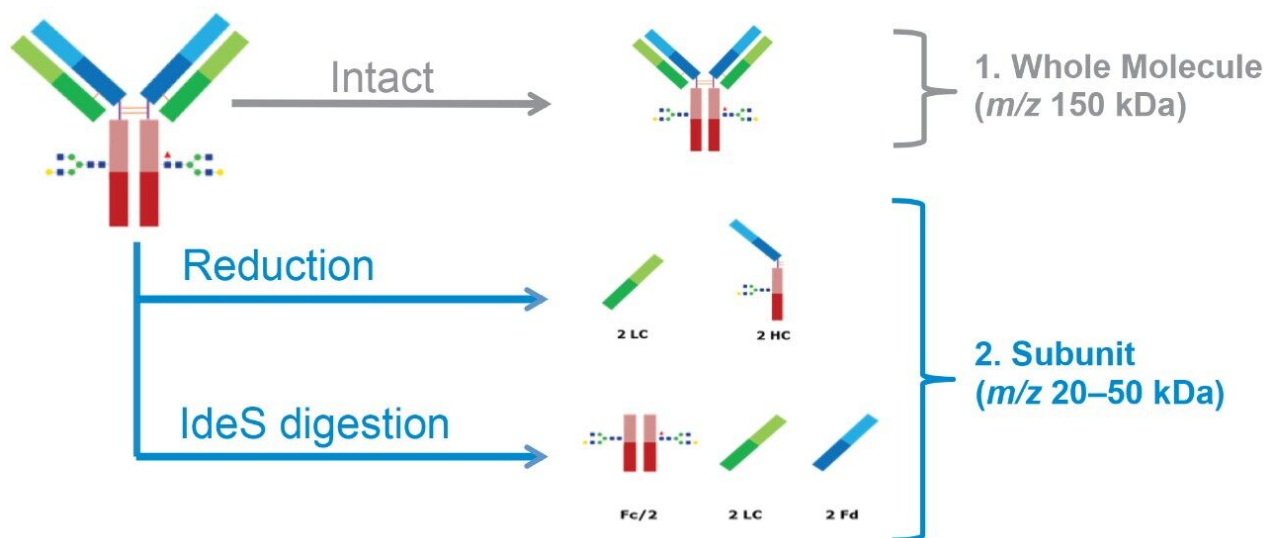


Figure 2. mAbs can be analyzed either at the intact or subunit levels.

6. The BSA standard or plasma supernatant should be injected until signal intensity of the analyte is stable.

7. Run replicates/standards as outlined in the section below.

LC-MS method conditions

LC system:	ACQUITY UPLC H-Class PLUS (FTN)
Detection:	Xevo G2-XS QToF, ESI+, sensitivity mode
Column:	ACQUITY UPLC Protein BEH C ₄ , 300 Å, 1.7 µm, 2.1 × 50 mm (p/n: 186004495)
Column temp.:	80 °C
Sample temp.:	8 °C
Injection volume:	5 µL

Mobile phase A: 0.1% formic acid in water

Mobile phase B: 0.1% formic acid in acetonitrile

LC gradient:

Time (min)	Flow rate (mL/min)	%A	%B	Curve
Initial	0.400	85.0	15.0	6
0.50	0.400	85.0	15.0	6
7.00	0.400	35.0	65.0	6
7.50	0.400	10.0	90.0	6
8.00	0.400	85.0	15.0	6
8.50	0.400	10.0	90.0	6
9.00	0.400	85.0	15.0	6
11.00	0.400	85.0	15.0	6

MS system

Ionization mode: ESI+

Capillary: 2.75 kV

Cone: 70 V

Source offset:	80 V
Source temp.:	125 °C
Desolvation temp.:	600 °C
Desolvation gas flow:	600 L/hr
Cone gas:	10

RF settings were default values as displayed in the installation guide document (715004586 Rev. B).

Full scan ToF-MS

Acquisition mode:	MS continuum
Acquisition time:	3.5 min
Range:	500–4000
MS scan time:	0.5 sec
Target ions:	941.654 (Fc/2), 1006.499 (LC)

Reference (LockSpray) properties

(acquire LockSpray – apply correction):

LockSpray reference compound:	GFP (785.8426)
Reference scan time:	0.1 sec

Lock mass frequency (interval, sec):	120 sec
Scans to average:	3
Mass window:	± 0.5 Da

Tof-MRM

(Precursor-precursor):

Acquisition mode:	MS continuum
Acquisition time:	3.5 min
Range:	500–2000
MS scan time:	0.2 sec
MRM window:	None
Precursor mass:	941.6>941.654 (Fc/2), 1006.5>1006.499 (LC)

Results and Discussion

Method Development, General Handling Conditions

For the development of the system check, the mAb subunit standard derived from the NIST by reduction and IdeS digestion was used. The three main components of the standard are Fc/2, LC and Fd'. These mAb subunits have theoretical masses above 23,000 Da. There was nonspecific binding observed when the standard was diluted in aqueous or buffer solutions. To mitigate, 0.1 mg/mL bovine serum albumin (BSA) is recommended where possible. In this example, Fd' coelutes with BSA, therefore, only the Fc/2 and LC subunits will be monitored for suitability.

Criteria that was monitored included chromatographic peak width, baseline peak resolution of Fc/2 and LC, and sensitivity. The goal of this application was to develop a reproducible method that demonstrates a robust performance and suitability of the Xevo G2-XS QToF prior to running samples for protein quantification.

Full Scan Tof-MS

Subunit standards were analyzed on the Xevo G2-XS QToF. To quantify Fc/2, m/z of 941.654, corresponding to the +27-charge state of the G1F isoform, was selected. To quantify LC, m/z of 1006.499, corresponding to the +23-charge state of the molecule, was monitored. Extracted ion chromatograms (XICs) of Fc/2 and LC are shown in Figures 3A and 3B, respectively.

Tof-MRM

(Optional: Testing these modes ensures targeted modes are available.)

- The Xevo G2-XS QToF platform is also capable of quantitating targeted ions and/or fragments using Tof-MRM mode. The Tof-MRM mode may be tested/carried out in two ways: Tof-MRM (Precursor-precursor): the precursor is selected in the quadrupole but not fragmented in the collision cell and monitored intact.
- Tof-MRM (Precursor-fragment): precursor is selected in the first quadrupole, which will be fragmented in the collision cell for the monitoring of a specified fragment ion (data not shown).

The same m/z masses used in full scan Tof-MS mode were considered, and target enhancement was engaged on the precursors (Figures 3C and 3D).

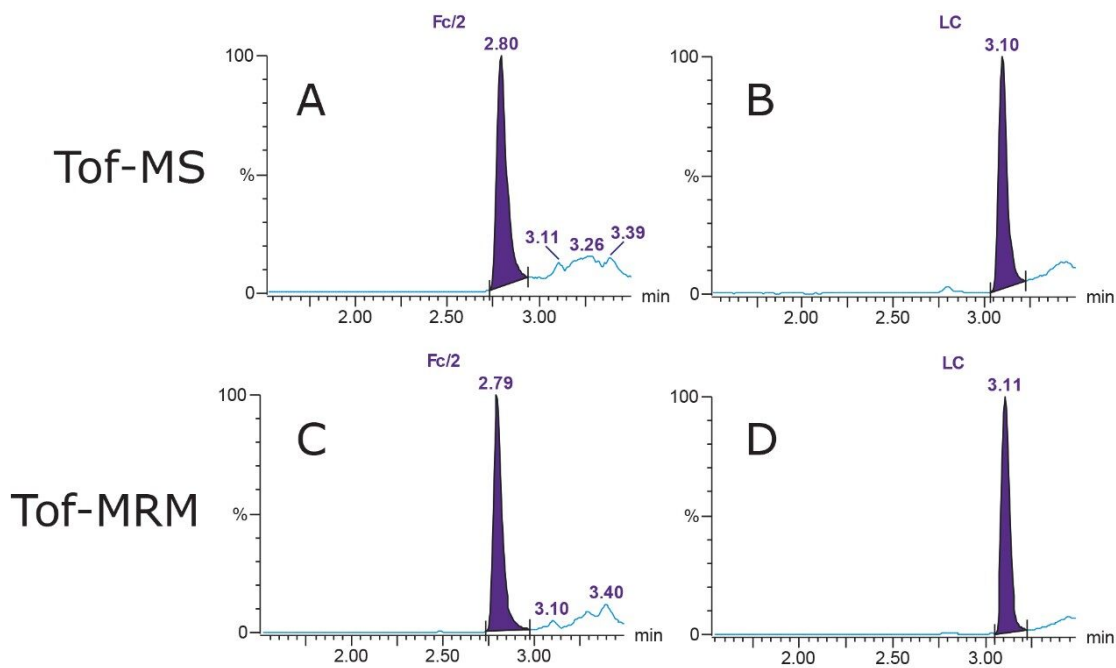


Figure 3. Tof-MS XICs of Fc/2 and LC subunits using the m/z of 941.654 (A) and 1006.499 (B), respectively. Tof-MRM (Precursor-precursor) XICs for Fc/2 and LC subunits (C and D). A total of 7.5 ng subunit standard was loaded on column.

System Check Performance Metrics

Linearity

Standards were run in six replicates for the determination of the accuracy and precision. Peak integration and quantification were carried out by using TargetLynx (Figure 4). The precision of all measurements was below 10% for all modes of acquisition, well below the 15% criteria recommended by the FDA guidance.² Displayed below is an example of %CV for the Fc/2 and LC in Tof-MS, Tof-MRM (Precursor-precursor) modes as well as their respective standard curves (Figures 5 and 6). This is intended as a rapid check for general performance as linear range and suitability testing for analytes of interest is recommended.

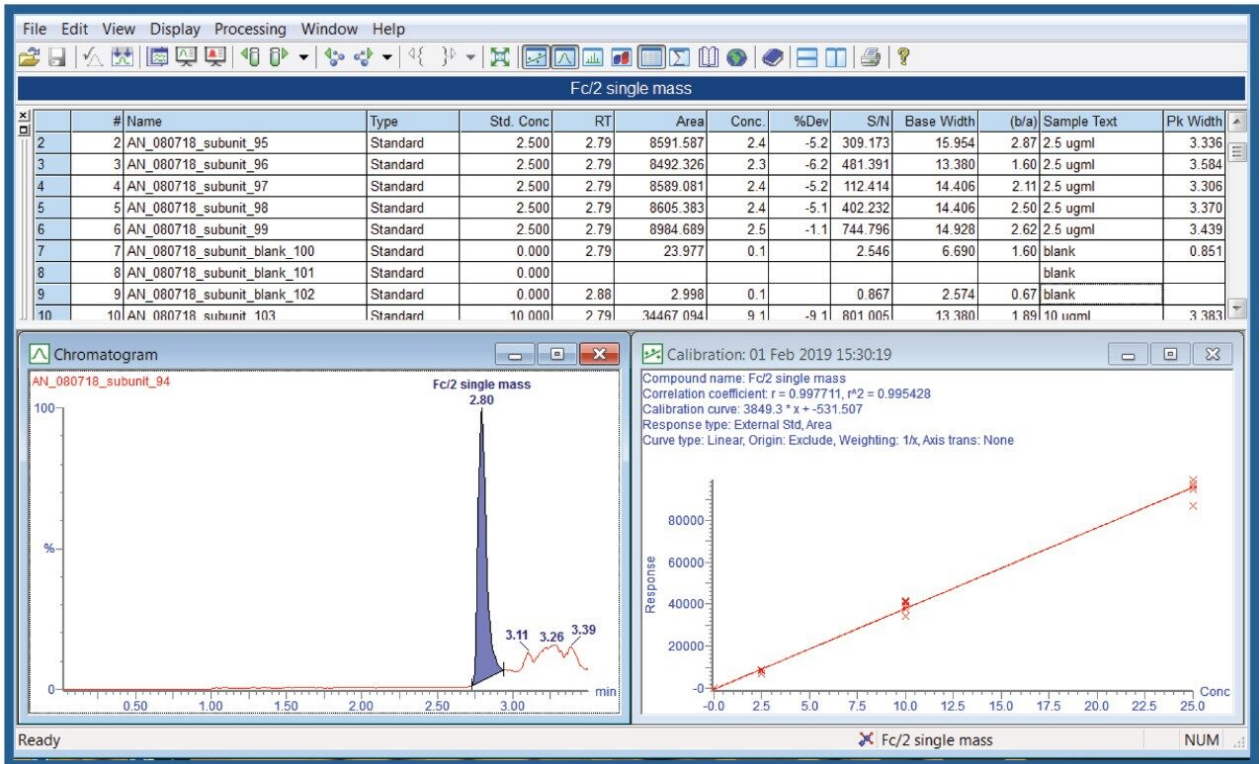
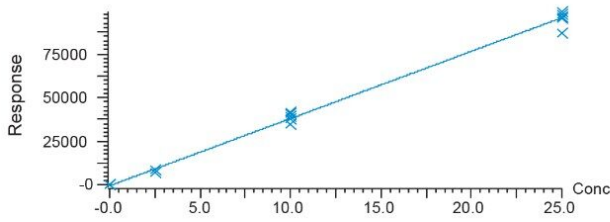


Figure 4. Quantification results in TargetLynx. Top panel represents sample list; bottom panel shows XIC (left) and the three-point calibration curve (right).

	QC	Expected concentration (µg/mL)	Measured concentration (µg/mL) n = 6	% Accuracy	%CV
Fc/2	LQC	2.5	2.3	92.7	8.9
	MQC	10	10.3	103.2	6.8
	HQC	25	24.9	99.5	4.4

Compound name: Fc/2 single mass
 Correlation coefficient: $r = 0.997711$, $r^2 = 0.995428$
 Calibration curve: $3849.3 * x + -531.507$
 Response type: External Std, Area
 Curve type: Linear, Origin: Exclude, Weighting: 1/x, Axis trans: None



	QC	Expected concentration (µg/mL)	Measured concentration (µg/mL) n = 6	% Accuracy	%CV
LC	LQC	2.5	2.4	94	8.1
	MQC	10	10.3	103.2	8.1
	HQC	25	24.9	99.4	5.3

Compound name: LC single mass
 Correlation coefficient: $r = 0.997132$, $r^2 = 0.994272$
 Calibration curve: $5896.99 * x + -751.356$
 Response type: External Std, Area
 Curve type: Linear, Origin: Exclude, Weighting: 1/x, Axis trans: None

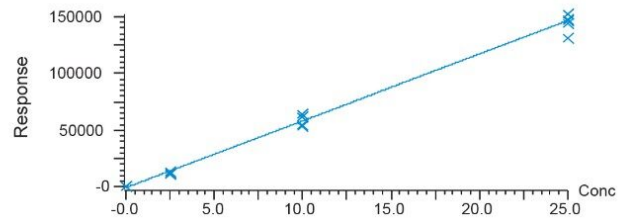
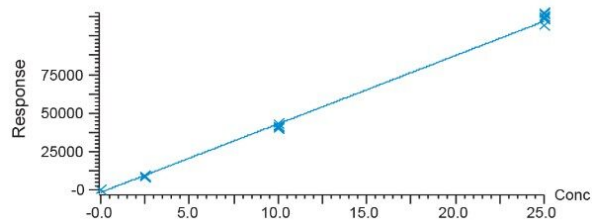


Figure 5. Single digit % CV showing good system performance leading to good reproducibility and robustness of the ToF-MS method.

	QC	Expected concentration (µg/mL)	Measured concentration (µg/mL) n = 6	% Accuracy	%CV
Fc/2	LQC	2.5	2.4	105.3	3.6
	MQC	10	9.6	104.2	3.1
	HQC	25	25.6	97.8	2.7

Compound name: Fc/2 single mass
 Correlation coefficient: $r = 0.998302$, $r^2 = 0.996607$
 Calibration curve: $4447.98 * x + -1635.07$
 Response type: External Std, Area
 Curve type: Linear, Origin: Exclude, Weighting: 1/x, Axis trans: None



	QC	Expected concentration (µg/mL)	Measured concentration (µg/mL) n = 6	% Accuracy	%CV
LC	LQC	2.5	2.3	106.7	4.7
	MQC	10	9.0	109.8	2.5
	HQC	25	26.8	92.9	5.1

Compound name: LC single mass
 Correlation coefficient: $r = 0.994156$, $r^2 = 0.988347$
 Calibration curve: $8336.86 * x + -3764.44$
 Response type: External Std, Area
 Curve type: Linear, Origin: Exclude, Weighting: 1/x, Axis trans: None

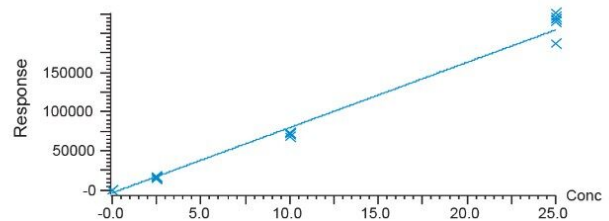


Figure 6. Single digit % CV showing good system performance leading to good reproducibility and robustness of the ToF-MRM method.

Retention Time and Chromatographic Peak Characteristics

The retention time of the subunits was monitored over an extended period, and reproducibility was determined to be within ± 0.1 min. This retention time reproducibility is well within the accepted limits for bioanalytical method validation guidance. Additionally, base width, FWHM (full width at half maximum), and peak asymmetry (b/a) were calculated and were shown to be reproducible on different days of the SC.³ These data are presented in Table 1. Significant increases in retention time reproducibility (>0.1 min) or deviations from typical criteria shown in Table 1 ($>30\%$) could be signs of poor LC performance (e.g., autosampler, pump, injector), higher column backpressure, insufficient conditioning, or even issues related to the sample.

		Tof-MS			Tof-MRM (Precursor-precursor)		
	Concentration ($\mu\text{g/mL}$)	Peak width at base (s)	FWHM (s)	b/a	Peak width at base (s)	FWHM (s)	b/a
Fc/2	2.5	16.0	5.2	1.6	14.8	4.3	1.5
	10	15.4	5.1	1.5	14.0	4.4	1.6
	25	15.5	5.1	1.6	14.3	4.5	1.6
LC	2.5	13.1	4.9	1.3	11.6	4.2	1.3
	10	14.2	4.8	1.4	12.3	4.2	1.4
	25	14.6	4.9	1.5	12.3	4.3	1.4

Table 1. Representative values for chromatographic peak characteristics obtained for the mAb subunit standard formulated in 0.1% formic acid in water with BSA.

Conclusion

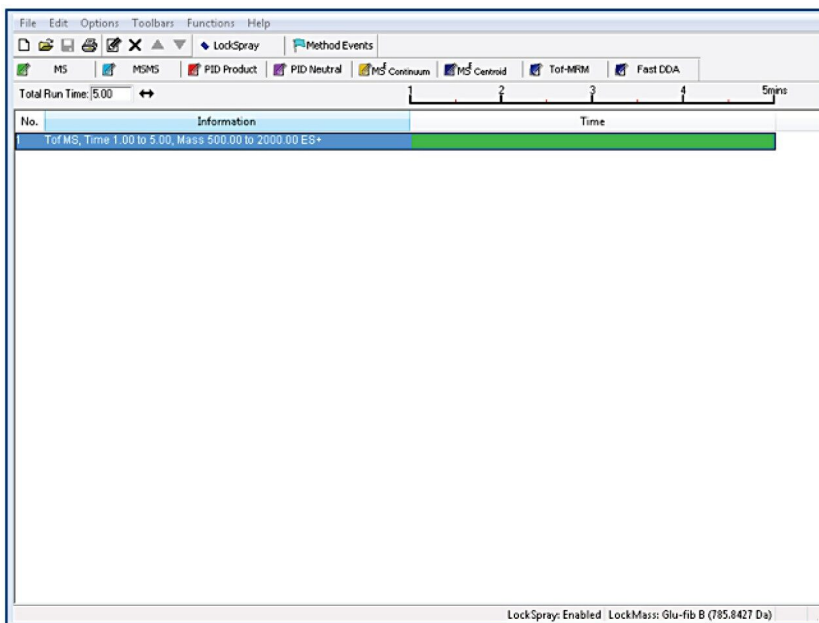
We report a routine system check to assess LC-MS system performance prior to intact protein quantification (intact or subunit analysis). This procedure assures optimal and robust performance. The method can also be used for troubleshooting a system that is presenting abnormal behaviors. Key metrics were measured including retention time, linearity, and chromatographic peak characteristics of subunits. It should be noted that this procedure and standards were not tested to a level expected for use as a system suitability test (SST).

References

1. Ecker, D.M.; Jones, S.D.; Levine, H.L. The therapeutic monoclonal antibody market. *mAbs*. 2015, 7(1), 9–14.
2. U.S. Department of Health and Human Services, Food and Drug Administration, Center for Drug Evaluation and Research (CDER) and Center for Veterinary Medicine (CVM). *Guidance for industry: Bioanalytical method validation*. Silver Spring, MD: FDA; 2001.
3. Center for Drug Evaluation and Research, U.S. Food and Drug Administration. Reviewer Guidance, *Validation of Chromatographic Methods*; FDA, Rockville, MD; Nov 1994.

Appendix 1

Tof-MS method setup



Function:1 MS

Acquisition TOF MS Collision Energy

Acquisition Times

Total time for this acquisition

Start Time 1 min

End Time 5 min

Source

Source ES

Acquisition Mode

Polarity Positive Negative

Analyser Mode Resolution Sensitivity

Dynamic Range Normal Extended

Target Enhancement Off Target Mass 200 Da

OK Cancel Apply

720006614en-a1b

Function:1 MS

Acquisition TOF MS Collision Energy

Da range

Acquire TOF MS over the range

Low Mass 500 Da

High Mass 2000 Da

Scanning Conditions

Scan Time 0.5 sec

Data Format Continuum

Instrument conditions

Override Cone Voltage value specified in tune file

Cone Voltage 40 V

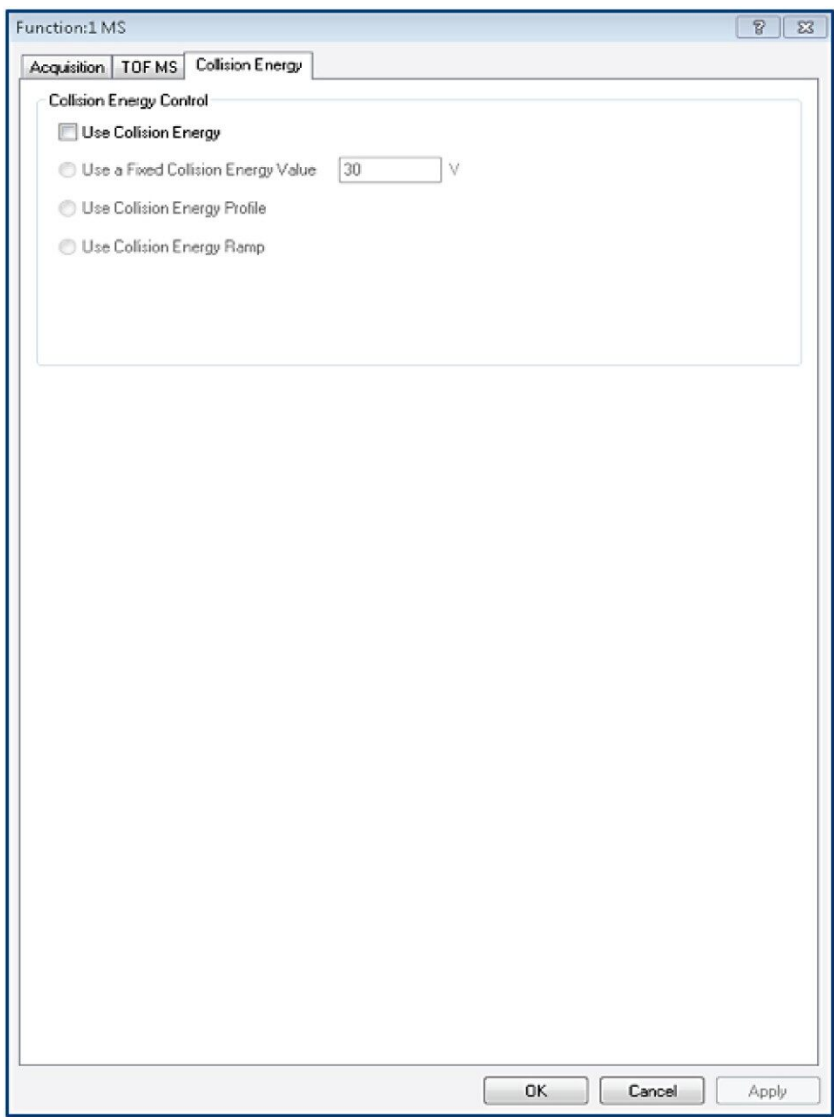
Ramp the Cone Voltage during the scan

Initial Voltage 40 V

Final Voltage 40 V

OK Cancel Apply

720006614en-a1c



720006614en-a1d

LockSpray Properties

Acquire LockSpray - Apply correction
 Acquire LockSpray - Do not apply correction
 No LockSpray

LockSpray Reference Compound:

+ Glu-fib B (785.8427 Da)

LockSpray Acquisition Settings

Acquisition Settings

Scan Time: 0.1 seconds
Interval: 120 seconds
Scans to Average: 3
Mass Window \pm : 0.5 Da

More >>

OK Cancel

Events

Enable

Time / Mins Event Action System
Initial Condition ▼ Flow State ▼ Waste ▼ Sample ▼

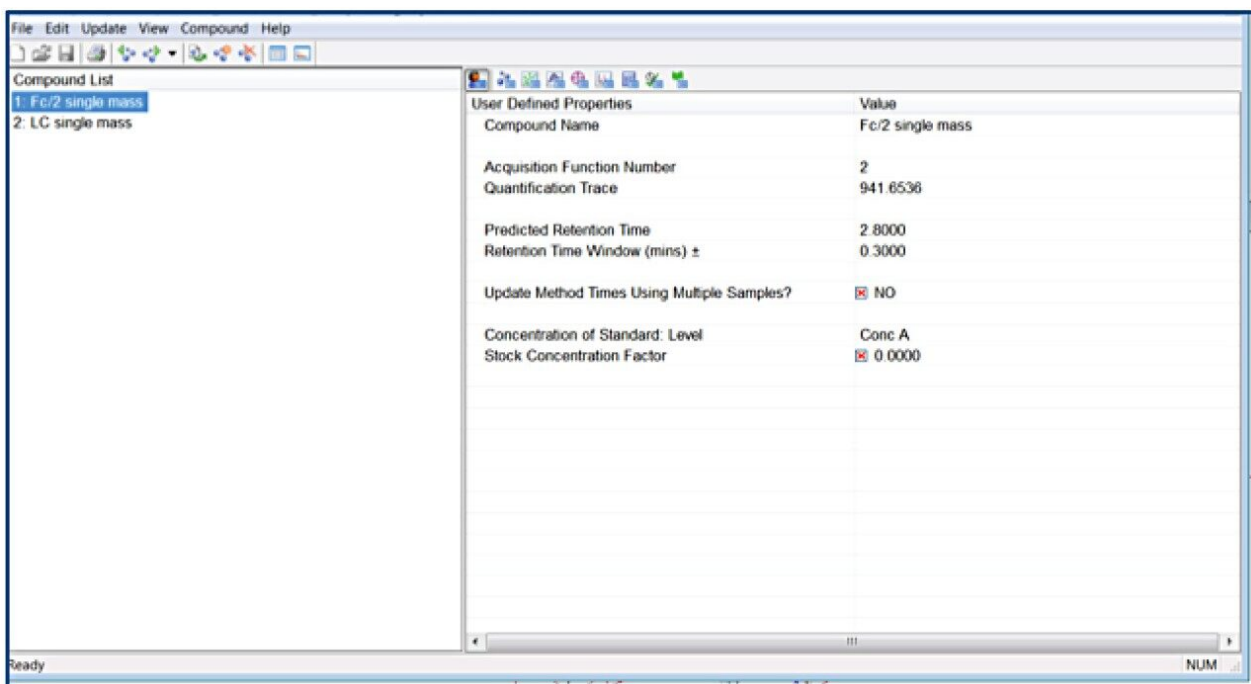
Time / Mins	Event	Action	System
Initial Condition	Flow State	Waste	Sample
Initial Condition	Reservoir	B	LockSpray
Initial Condition	Refill	Auto-Refill	LockSpray
Initial Condition	Infusion	Start	LockSpray
1.00	Flow State	LC	Sample
5.00	Flow State	Waste	Sample

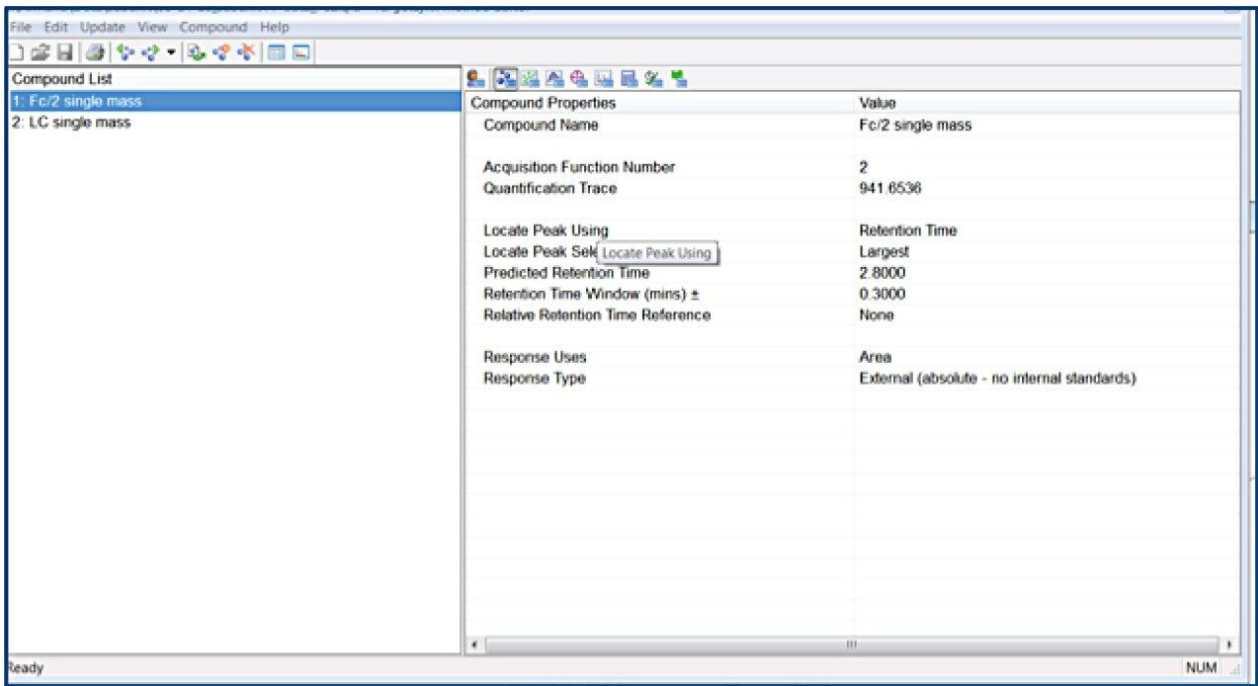
Solvent Delay Options

API Probe Temperature (°C):

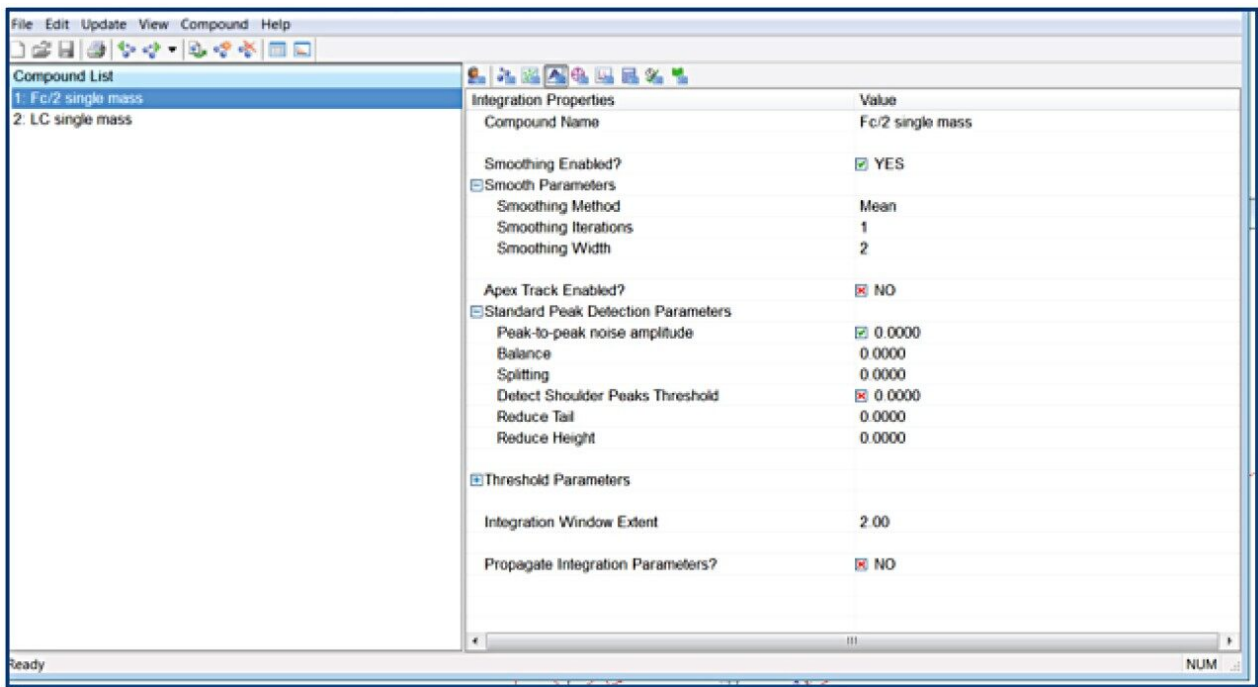
Appendix 2

TargetLynx method based on the ToF-MRM (Precursor-precursor) acquisition is displayed. Detailed parameters are shown only for Fc/2.

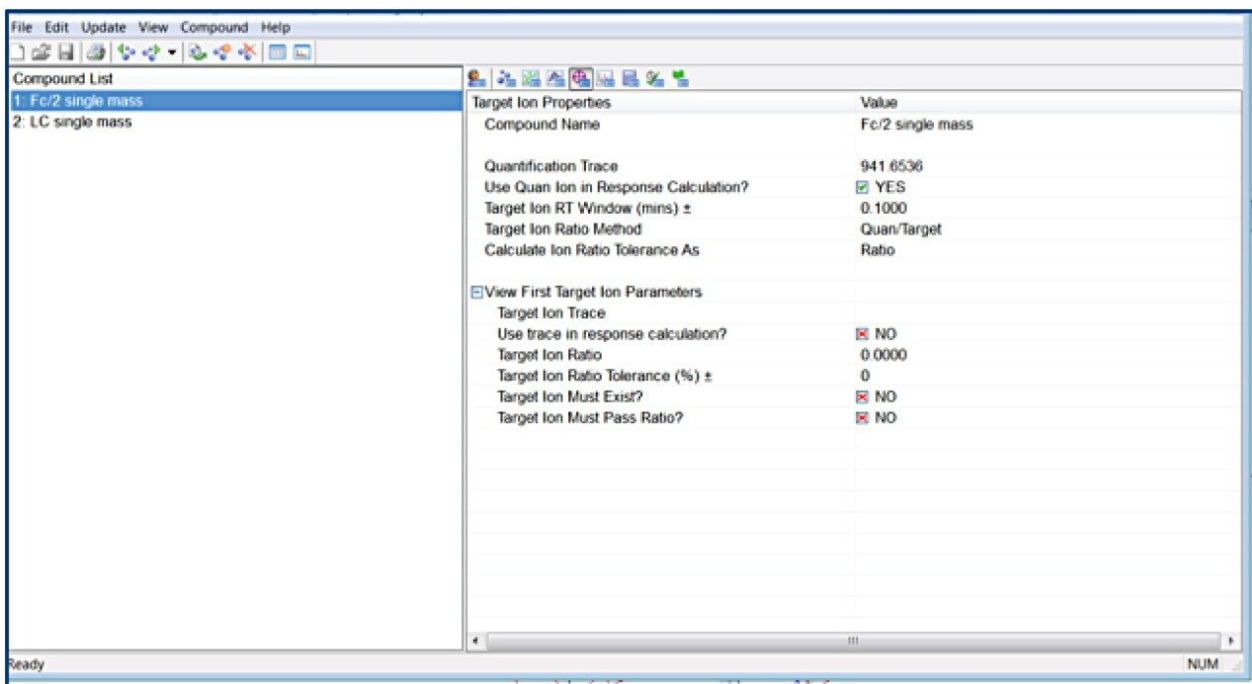




72006614en-a2b



72006614en-a2c



720006614en-a2d

Appendix 3

Reagents and materials

- Leucine enkephalin, 200 ng/mL solution in water/acetonitrile (50:50, v/v) and 0.1% formic acid
- [Glu]-fibrinopeptide (GFP), 100 fmol/μL solution in water:acetonitrile (75:25, v/v)
- [Glu]-fibrinopeptide (GFP), 500 ng/mL solution in water:acetonitrile (75:25, v/v)
- Nal, 1 mg/mL solution in water:acetonitrile (50:50, v/v)
- BSA
- NIST mAb subunit standard (p/n: 186008927)
- Waters polypropylene vials (p/n: 186002640 or 186005221)
- LC-MS grade water, acetonitrile (ACN), methanol (MeOH), isopropanol (IPA), formic acid (FA)
- ACQUITY UPLC BEH C₄, 300 Å, 1.7 μm, 2.1 x50 mm Column (p/n: 186004495)
- Analytical balance
- Vortex
- Pipette (20, 200, 1000 μL)

Preparation of calibration and lock mass solutions

Use the following procedure to prepare calibration and lock mass solution:

- Preparation of a 200 ng/mL leucine enkephalin solution:

—Prepare a 1 mg/ml stock solution of leucine enkephalin solution in water

- Do not use organic solvent as it will not dissolve!

—Take 100 μ L of the stock solution and add to 500 mL of 50:50 acetonitrile:water + 0.1% formic acid

- Preparation of [Glu]-Fibrinopeptide (GFP) solutions:

—Dissolve 0.1 mg of purchased [Glu1]-Fibrinopeptide B Standard (p/n: 700004729) in 200 mL of water:acetonitrile (75:25, v/v) to obtain a 500 ng/mL solution

—Dilute above solution 1:32 to obtain approximately a 100 fmol/ μ L solution

- Nal, 1 mg/mL solution in water:acetonitrile (50:50, v/v)

—Dissolve 1 mg of Nal powder in 1 mL of water:acetonitrile (50:50, v/v) to obtain a 1 mg/mL solution

- Preparation of 0.1 mg/mL BSA solution:

—Weigh 0.1 mg of BSA and dissolve in 1 mL of 0.1% formic acid in water

Featured Products

ACQUITY UPLC H-Class PLUS System <<https://www.waters.com/10138533>>

Xevo G2-XS QToF Quadrupole Time-of-Flight Mass Spectrometry <<https://www.waters.com/134798222>>

LockSpray Exact Mass Ionization Source <<https://www.waters.com/1000396>>

MassLynx MS Software <<https://www.waters.com/513662>>

TargetLynx <<https://www.waters.com/513791>>

©2019 Waters Corporation. All Rights Reserved.